

Cloud Platforms in Industry

Amazon Web Services



Amazon Web Services (AWS) is a cloud computing platform that provides a variety of services accessible over the public internet. AWS is a subsidiary of Amazon that offers cloud computing services to individuals, businesses, and governments.

AWS provides a range of services, including:

Servers, Storage, Networking, Remote computing, Email, Mobile development, Security, Database storage, Content delivery.

AWS manages and maintains hardware and infrastructure, saving organizations and individuals the cost and complexity of purchasing and running resources on site.

AWS offers a broad set of global cloud-based products, including:

Compute, Storage, Databases, Analytics, Networking, Mobile, Developer tools, Management tools, IoT, Security, Enterprise applications.

AWS charges on an hourly basis. Some say the benefits of AWS include:

- Ease of use
- Diverse array of tools
- Unlimited server capacity
- Reliable encryption and security
- Managed IT services
- Flexibility and affordability

Advantages of Amazon Web Services

- AWS allows you to easily scale your resources
- AWS provides a highly reliable and secure infrastructure
- AWS offers a wide range of services and tools that can be easily combined to build and deploy a variety of applications, making it highly flexible.
- AWS offers a pay-as-you-go pricing mode

Disadvantages of Amazon Web Services

- AWS can be complex, with a wide range of services and features
- AWS can be expensive, especially if you have a high-traffic application
- While AWS provides many security features and tools, securing your resources
- AWS manages many aspects of the infrastructure

Services by AWS

Amazon Web Services (AWS) is a powerful and versatile cloud computing platform offered by Amazon. It provides a wide range of services that help individuals and businesses run applications, store data, and manage their computing resources without the need for physical servers.

Compute Services

1. Amazon EC2 (Elastic Compute Cloud):

Think of EC2 as a virtual computer in the cloud. You can easily scale it up or down based on your needs.

It is a part of Amazon.com's cloud-computing platform, Amazon Web Services (AWS), that allows users to rent virtual computers on which to run their own computer applications. EC2 encourages scalable deployment of applications by providing a web service through which a user can boot an Amazon Machine Image (AMI) to configure a virtual machine, which Amazon calls an "instance", containing any software desired. A user can create, launch, and terminate server-instances as needed, paying by the second for active servers – hence the term "elastic". EC2 provides users with control over the geographical location of instances that allows for latency optimization and high levels of redundancy. In November 2010, Amazon switched its own retail website platform to EC2 and AWS.

2. AWS Lambda:

Lambda is like a magical helper that runs your code automatically in response to events, and you don't even have to worry about managing servers.

It is an event-driven, server less computing platform provided by Amazon as a part of Amazon Web Services. It is designed to enable developers to run code without provisioning or managing servers. It executes code in response to events and automatically manages the computing resources required by that code. It was introduced on November 13, 2014. Unlike Amazon EC2, which is

priced by the hour but metered by the second, AWS Lambda is metered by rounding up to the nearest millisecond with no minimum execution time.

Storage Services

3. Amazon S3 (Simple Storage Service):

S3 is like a giant digital warehouse where you can store and retrieve any amount of data. It's perfect for things like storing pictures, videos, or backups.

Amazon S3 or Amazon Simple Storage Service is a service offered by Amazon Web Services (AWS) that provides object storage through a web service interface. Amazon S3 uses the same scalable storage infrastructure that Amazon.com uses to run its e-commerce network. Amazon S3 can store any type of object, which allows uses like storage for Internet applications, backups, disaster recovery, data archives, data lakes for analytics, and hybrid cloud storage. AWS launched Amazon S3 in the United States on March 14, 2006, then in Europe in November 2007.

4. Amazon EBS (Elastic Block Store):

EBS is like a special hard drive attached to your virtual computer. It's great for storing data that needs frequent updates.

Amazon Elastic Block Store (EBS) provides raw block-level storage that can be attached to Amazon EC2 instances and is used by Amazon Relational Database Service (RDS). It is one of the two block-storage options offered by AWS, with the other being the EC2 Instance Store. Amazon EBS provides a range of options for storage performance and cost. These options are divided into two major categories: SSD-backed storage for transactional workloads, such as databases and boot volumes (performance depends primarily on IOPS), and disk-backed storage for throughput intensive workloads, such as Map Reduce and log processing (performance depends primarily on MB/s).

Communication Services

5. Amazon VPC (Virtual Private Cloud):

VPC is like creating your own private space in the AWS cloud. It helps you control and organize your virtual network.

Amazon Virtual Private Cloud (VPC) is a commercial cloud computing service that provides a virtual private cloud, by provisioning a logically isolated section of Amazon Web Services (AWS) Cloud. Enterprise customers can access the

Amazon Elastic Compute Cloud (EC2) over an IPsec based virtual private network. Unlike traditional EC2 instances which are allocated internal and external IP numbers by Amazon, the customer can assign IP numbers of their choosing from one or more subnets.

6. AWS Direct Connect:

Direct Connect is like having a dedicated express lane from your office to the AWS cloud, ensuring a fast and reliable connection.

AWS Direct Connect is a networking service that provides a private network connection between AWS and a user's facilities. It's an alternative to using the internet to connect to AWS. A Direct Connect Gateway enables users to combine Private VIFs with multiple VGWs in the local or in remote regions. This feature can be used to establish connectivity from an AWS Direct Connect location in one geographical zone to an AWS Region in a different geographical zone. Link aggregation is a common networking solution that aggregates several physical links into a single channel. This increases bandwidth and improves resilience in case of a link failure.

Additional Services

7. Database Services (e.g., Amazon RDS, Amazon DynamoDB):

AWS offers managed databases that take care of the technical details, making it easy for you to store and retrieve data.

It offers a variety of database services, including relational, key-value, document, in-memory, graph, time series, wide column, and ledger databases.

8. Security and Identity (e.g., IAM, KMS):

Think of IAM as the guardian controlling who can access what in AWS. KMS is like a secret keeper managing encryption keys for added security.

AWS Identity and Access Management (IAM) is a web service that helps users securely control access to AWS resources. IAM administrators can control who can be authenticated and authorized to use Account Management resources. IAM is a framework of policies, processes, and technologies that enable organizations to manage digital identities and control user access to critical corporate information. AWS provides services that help users protect their data, accounts, and workloads from unauthorized access. AWS data protection services provide encryption capabilities, key management, and sensitive data discovery.

9. Machine Learning and AI (e.g., Amazon SageMaker):

AWS makes it easy for you to dive into the world of machine learning. SageMaker is your guide for building and deploying smart applications.

Amazon Web Services (AWS) offers a range of artificial intelligence (AI) and machine learning (ML) services, infrastructure, and implementation resources. AWS AI services can provide ready-made intelligence for applications and workflows. These services can integrate with applications to address common use cases, such as Personalized recommendations, Modernizing contact centers, Improving safety and security, Increasing customer engagement

10. Management and Monitoring (e.g., CloudWatch, CloudTrail):

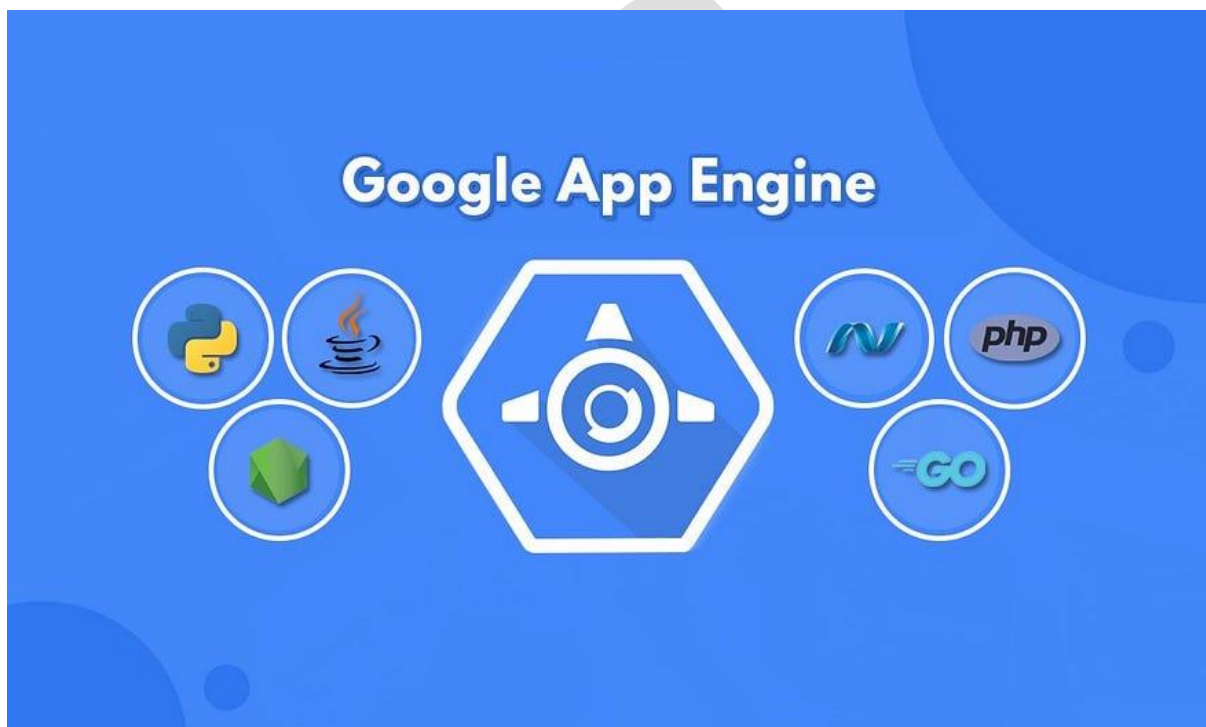
CloudWatch is like your watchful eye, monitoring the health of your applications. CloudTrail keeps a record of everything happening in AWS for auditing. AWS monitoring is a set of practices that can be used to verify the security and performance of AWS resources and data. It involves scanning AWS resources and applications to collect data and ensure everything is operating smoothly and securely. AWS monitoring helps identify vulnerabilities and issues, predict performance, and optimize configurations. It can also help maintain reliability and availability.

In summary, AWS is like a toolbox filled with various tools. You pick the tools you need to build and run your digital creations in the cloud, making it accessible, scalable, and powerful for everyone.

Google AppEngine



Google App Engine (GAE) is a service for developing and hosting Web applications in Google's data centers, belonging to the platform as a service (PaaS) category of cloud computing. Web applications hosted on GAE are sandboxed and run across multiple servers for redundancy and allow for scaling of resources according to the traffic requirements of the moment. App Engine automatically allocates additional resources to the servers to accommodate the increased load.



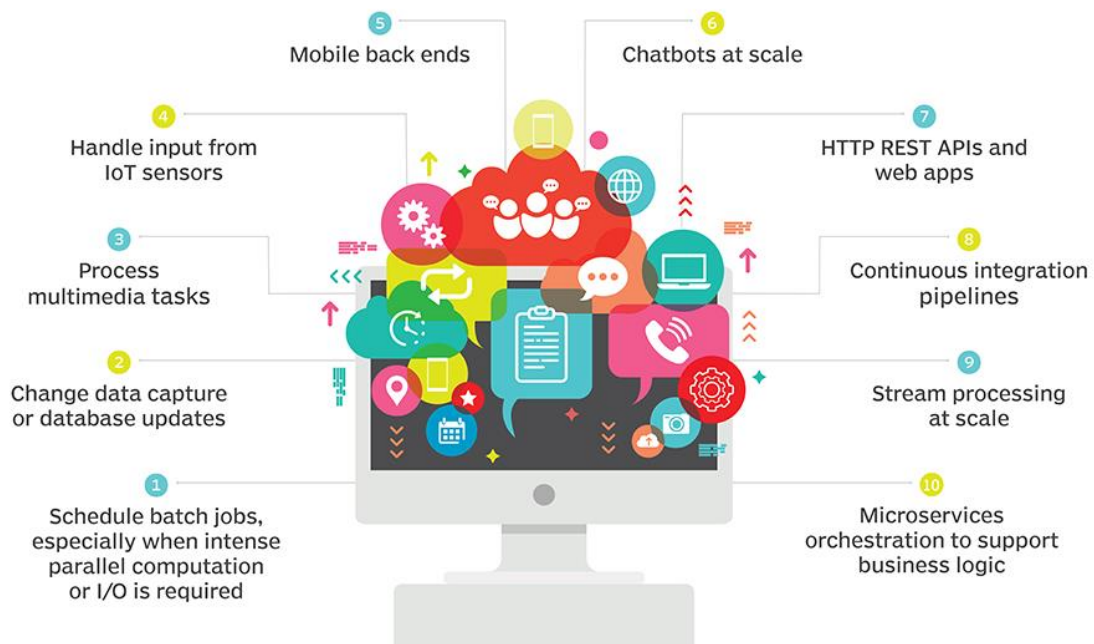
Google App Engine is Google's platform as a service offering that allows developers and businesses to build and run applications using Google's advanced infrastructure. These applications are required to be written in one of a few supported languages, namely: Java, Python, PHP, and Go. It also requires the use of Google query language and the database used is Google Big Table. Applications must abide by these standards, so applications either must be developed with GAE in mind or else modified to meet the requirements.

GAE is a platform, so it provides all of the required elements to run and host Web applications, be it on mobile or the Web. Without this all-in feature, developers would have to source their own servers, database software, and the APIs that would make all of them work properly together, not to mention the entire configuration that must be done. GAE takes this burden off the developers so they can concentrate on the app front end and functionality, driving better user experience.

Compare AWS Elastic Beanstalk vs. Google App Engine

	AWS ELASTIC BEANSTALK	GOOGLE APP ENGINE
LANGUAGE OR RUNTIME SUPPORT	<ul style="list-style-type: none"> ■ Apache Tomcat (J2EE) ■ Go ■ Java SE ■ .NET Core on Linux ■ .NET Core on Windows Server ■ Node.js ■ PHP ■ Python ■ Ruby 	<ul style="list-style-type: none"> ■ Go ■ Java ■ Node.js ■ PHP ■ Python ■ Ruby ■ Custom runtimes for other languages
CONTAINER SUPPORT	<ul style="list-style-type: none"> ■ Docker containers using Amazon Linux 2 platform 	<ul style="list-style-type: none"> ■ Docker containers with App Engine flexible environment
STORAGE AND DATABASES	<ul style="list-style-type: none"> ■ Amazon S3 ■ Amazon RDS ■ Amazon DynamoDB ■ Microsoft SQL Server ■ Oracle ■ Other relational databases running on EC2 	<ul style="list-style-type: none"> ■ Cloud Storage ■ Cloud Firestore ■ Cloud SQL for MySQL ■ Cloud SQL for PostgreSQL ■ External databases from other public providers with proper configuration
TRAFFIC ROUTING, LOAD BALANCING AND SCALING	<ul style="list-style-type: none"> ■ Elastic Load Balancing ■ Amazon EC2 Auto Scaling based on configured application policies ■ Supports multi-Availability Zone deployments 	<ul style="list-style-type: none"> ■ Uses External HTTP(S) Load Balancing ■ Cloud CDN ■ Automatic, Basic and Manual scaling
MONITORING AND LOGGING	<ul style="list-style-type: none"> ■ Amazon CloudWatch ■ AWS CloudTrail ■ AWS X-Ray 	<ul style="list-style-type: none"> ■ Cloud Monitoring ■ Cloud Logging ■ Cloud Debugger ■ Error Reporting
APP VERSION CONTROL	<ul style="list-style-type: none"> ■ Automatically creates an application version whenever source code is uploaded. Deletes old versions according to an application lifecycle policy. Also supports tagging resources to identify different stages of development, allocate costs or control access. 	<ul style="list-style-type: none"> ■ Each application consists of one or more services. Each service can be configured to use different runtimes and to operate with different performance settings. Each service also supports multiple versions.
SECURITY	<ul style="list-style-type: none"> ■ Supports VPC deployments ■ Access controls via EC2 security groups ■ User and group ID via integration with AWS IAM 	<ul style="list-style-type: none"> ■ Supports VPC deployments ■ Supports role-based access controls using OAuth 2.0, Google Workspace domain accounts or user-managed service accounts in Cloud IAM ■ App Engine Firewall
PLATFORM UPDATES	<ul style="list-style-type: none"> ■ Automatically performs platform updates for patches and minor platform versions. ■ Major platform updates must be manually initiated since they often require compatibility testing. 	<ul style="list-style-type: none"> ■ Automatically applies critical, backward compatible updates to OS instances and runtime environments.
BILLING MODEL	<ul style="list-style-type: none"> ■ No charge for the PaaS, only for the associated AWS resources, such as EC2, S3 and RDS. 	<ul style="list-style-type: none"> ■ Prices vary depending on the type of environment used (standard and flexible), as well as charges from other Google Cloud products.

10 common uses for serverless platforms



Key features of GAE include the following:

API selection. GAE has several built-in APIs, including the following five:

- **Blobstore** for serving large data objects;
- **GAE Cloud Storage** for storing data objects;
- **Page Speed Service** for automatically speeding up webpage load times;
- **URL Fetch Service** to issue HTTP requests and receive responses for efficiency and scaling; and
- **Memcache** for a fully managed in-memory data store.

Advantages

- **Ease of setup and use.** GAE is fully managed, so users can write code without considering IT operations and back-end infrastructure. The built-in APIs enable users to

build different types of applications. Access to application logs also facilitates debugging and monitoring in production.

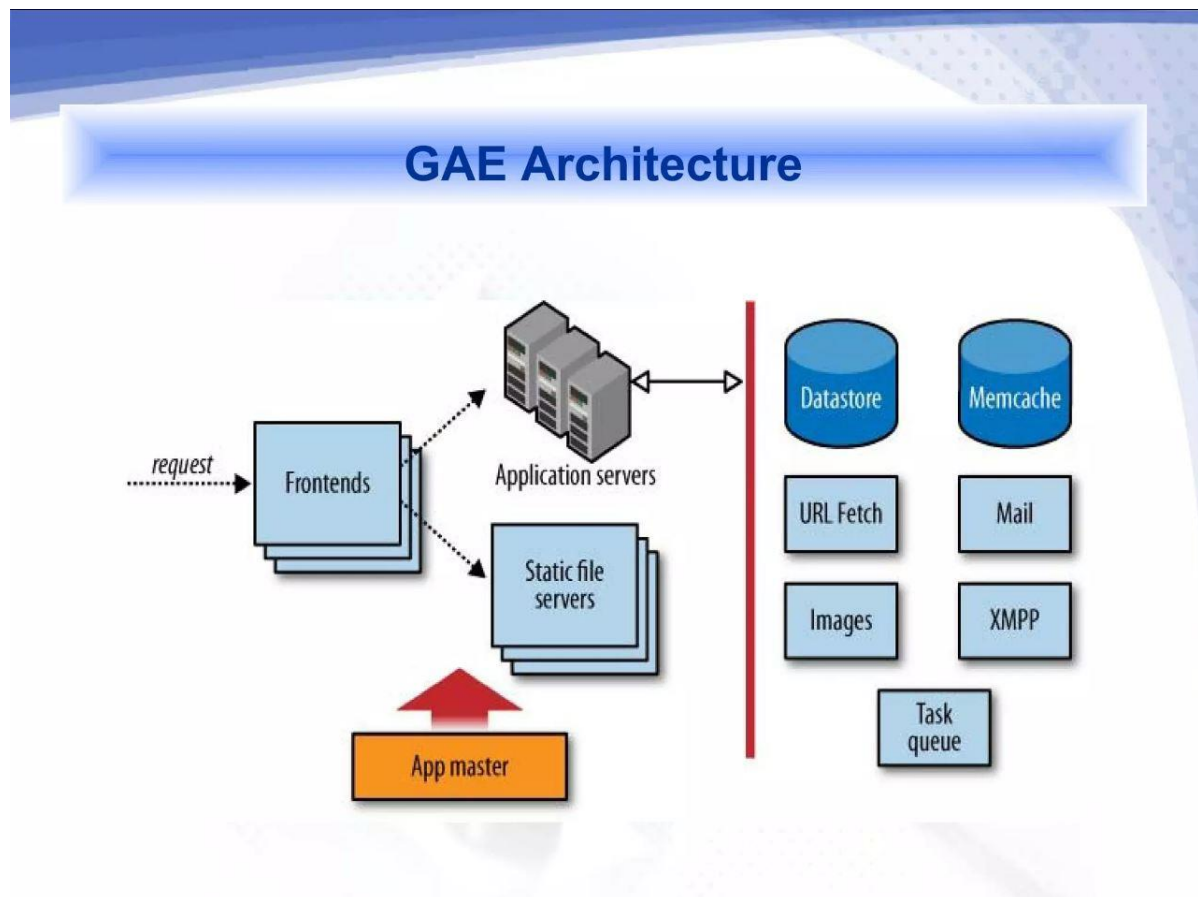
- **Pay-per-use pricing.** GAE's billing scheme only charges users daily for the resources they use. Users can monitor their resource usage and bills on a dashboard.
- **Scalability.** Google App Engine automatically scales as workloads fluctuate, adding and removing application instances or application resources as needed.
- **Security.** GAE supports the ability to specify a range of acceptable Internet Protocol (IP) addresses. Users can allow list specific networks and services and blocklist specific IP addresses.

Disadvantages

- **Lack of control.** Although a managed infrastructure has advantages, if a problem occurs in the back-end infrastructure, the user is dependent on Google to fix it.
- **Performance limits.** CPU-intensive operations are slow and expensive to perform using GAE. This is because one physical server may be serving several separate, unrelated app engine users at once who need to share the CPU.
- **Limited access.** Developers have limited, read-only access to the GAE filesystem.
- **Java limits.** Java apps cannot create new threads and can only use a subset of the Java runtime environment standard edition classes.

Architecture and Core Concepts:

Google App Engine (GAE) is a fully managed platform-as-a-service (PaaS) offering from Google Cloud Platform. It enables developers to build and deploy applications without managing the underlying infrastructure.



Here are some details about GAE's architecture:

- Application: The top-level container that includes the service, version, and instance resources that make up the app.
- Services: API requests from mobile devices, internal, administration-type requests, and backend processing such as billing pipelines and data analysis.
- Environments: The standard environment can scale from zero instances up to thousands very quickly. The flexible environment must have at least one instance running for each active version and can take longer to scale out in response to traffic.
- Software components: GAE can be thought of as the combination of several software components.
- Technologies: GAE uses Google File System.

GAE provides tools for developing, testing, launching, and updating applications. Developers can design applications on this platform in a very simple form.

Here are some core concepts:

Runtime Environments:

App Engine supports multiple runtime environments, including standard environments (for automatic scaling) and flexible environments (for more control over the underlying infrastructure).

Google App Engine (GAE) is a platform as a service (PaaS) that provides a platform for developers to build and deploy scalable applications on the Google cloud platform. It supports application development and runtime environments in many languages, such as Java, Python, PHP, SQL, and Go. GAE provides four possible runtime environments for applications, one for each of four programming languages: Java, Python, PHP, and Go. It also supports other languages via "custom runtimes". GAE is a fully managed, serverless platform for developing and hosting web applications at scale. It provides a multitude of tools and an isolated, secure environment that runs swiftly.

Application Deployment:

Developers upload their code and configuration files to App Engine, and the platform automatically handles the deployment, scaling, and management of the application.

The GAE module enables Google App Engine support for your application. It wraps common GAE services in play basic services whenever possible (Logging, Mail, Cache...) and expose directly other Google specific services (User services, Datastore...) Moreover, this module sets up a GAE development environment directly in the play development server, so you don't need to develop directly in the Google App Engine SDK (but it's supported too).

Scalability:

App Engine provides automatic scaling based on demand. It can handle varying levels of traffic by dynamically allocating resources.

Google App Engine (GAE) is a platform for building web and mobile apps that can scale automatically. The standard environment can scale from zero to thousands of instances quickly. The flexible environment requires at least one instance for each active version and can take longer to scale. The scaling type determines how the number of instances are provisioned relative to the incoming traffic to your application. The scaling type of a service/version controls how additional instances are created.

Data Storage:

Datastore is a NoSQL database service provided by App Engine for storing and retrieving data. It supports scalable and fully managed storage.

Google App Engine uses Google Cloud Datastore as its native database. It also supports other databases, such as Google Cloud SQL and Google Cloud Bigtable. To store data and files on App Engine, you can use Google Cloud services or any other storage service that is supported

by your language and is accessible from your App Engine instance. When you create an app, App Engine creates a default bucket that provides the first 5GB of storage for free. The default bucket also includes a free quota for Cloud Storage I/O operations.

To use Cloud Storage with App Engine, you can:

- View the names of the existing buckets in your App Engine project.
- In your app, declare Cloud Storage as a dependency by adding the library to your app's dependencies file.
- Use the Google Cloud Client Library to upload or download data from your buckets.

Services Integration:

GAE integrates with other Google Cloud services, allowing developers to use services like Cloud Storage, Cloud SQL, and others to enhance their applications.

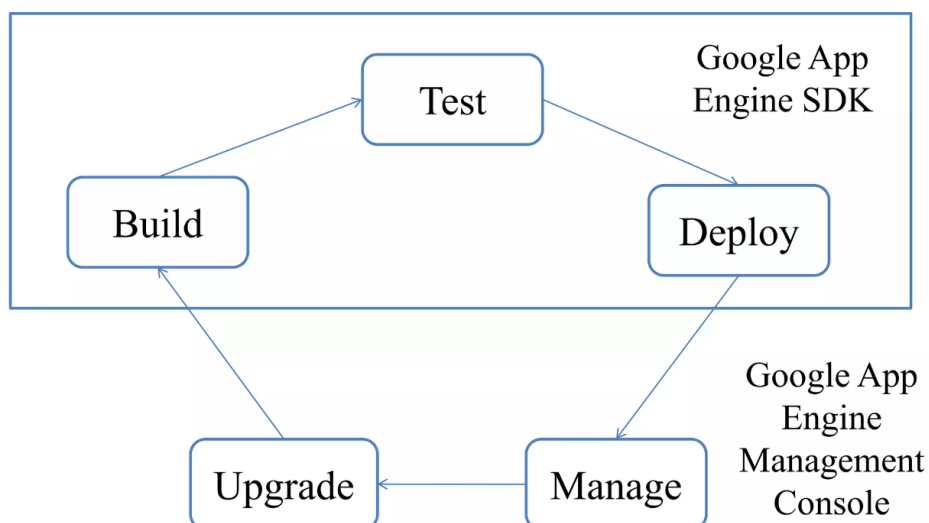
GAE works with popular development tools such as Eclipse, IntelliJ, Maven, Git, Jenkins, and PyCharm. It primarily supports Go, PHP, Java, Python, Node.js, .NET, and Ruby applications, although it can also support other languages via "custom runtimes". GAE is a fully managed, serverless platform for developing and hosting web applications at scale. It requires that applications be written in Java or Python, store data in Google Bigtable and use the Google query language.

GAE provides a powerful distributed data storage service. It comprises the following five major components:

- DataStore: Offers data storage services based on BigTable techniques
- Google App Engine: Provides a secure data storage

Application Life Cycle:

GAE Application Lifecycle



The life cycle of an App Engine application involves several stages:

Test: Developers rigorously test their applications in the local development environment to ensure functionality and identify potential issues.

Deploy: After successful testing, the application is deployed to Google App Engine using the 'gcloud app deploy' command, and a specific version is assigned for version control.

Manage: In this phase, developers use monitoring tools like Stackdriver to oversee the application's performance, resource usage, and user interactions.

Upgrade: Enhancements or bug fixes are made to the application, and new versions are deployed. Features like traffic splitting may be utilized for seamless updates.

Build: An iterative phase involving continuous improvement based on user feedback, evolving requirements, and emerging technologies.

This life cycle ensures a systematic approach to application development, deployment, and management on Google App Engine.

Cost Model:

1. Resource Consumption:

App Engine uses a consumption-based pricing model. You pay for the resources (CPU, memory, storage, etc.) your application consumes.

2. Instance Class:

Pricing is influenced by the instance class you choose. Different instance classes offer varying levels of performance and capabilities.

3. Datastore Operations:

Costs are associated with the number of Datastore operations (reads, writes, deletes) your application performs.

4. Outgoing Bandwidth:

App Engine charges for outgoing bandwidth from your application.

5. Free Tier:

Google Cloud offers a free tier with specific limits, allowing users to explore and test the platform at no cost.


6. Flexible Environment Costs:

In the flexible environment, where you have more control over the infrastructure, costs are influenced by the resources you provision, such as VM instances, storage, and networking.

7. Standard Environment Costs:

In the standard environment, costs are tied to the number of instance hours and data stored in Datastore.

Here is the example of GAE Cost Model

Resource	Used	Free	Billable	Charge
CPU Time: \$0.10/CPU hour	2.90	6.50	0.00	\$0.00
Bandwidth Out: \$0.12/GByte	0.08	1.00	0.00	\$0.00
Bandwidth In: \$0.10/GByte	0.01	1.00	0.00	\$0.00
Stored Data: \$0.005/GByte-day	0.01	1.00	0.00	\$0.00
Recipients Emailed: \$0.10/1000 Emails	0.00	2.00	0.00	\$0.00
Backend Usage: Prices 	\$0.00	\$0.72	\$0.00	\$0.00
Always On: \$0.30/Day	No	-	-	\$0.00
Total:				\$0.00

It's important for developers to carefully plan and monitor resource usage to optimize costs. Google Cloud's pricing calculator and documentation provide detailed information on cost estimation and management.

Observation:

Google App Engine simplifies application development by abstracting infrastructure complexities, offering both standard and flexible runtime environments for automatic scaling or greater control. The platform's automatic scaling dynamically adjusts resources based on demand, and integration with services like Datastore streamlines NoSQL data storage. App Engine's structured application life cycle, supported by monitoring tools, ensures efficient development and maintenance. Its consumption-based pricing model aligns costs with resource usage, with a free tier encouraging exploration. Developers must optimize resource usage, aided by user-friendly tools like 'gcloud' and IDE integrations. The platform strikes a balance between control and abstraction, providing a versatile environment for scalable and managed cloud applications.

Microsoft Azure

Microsoft Azure is a cloud computing platform and suite of services that allows individuals and businesses to create, deploy, and manage applications and services. It provides a wide range of cloud-based solutions that use Microsoft-operated data centres.



Azure manages and maintains hardware, infrastructure, and resources in data centers. These assets can be accessed by individuals and organizations over the internet for free or on a pay-per-use basis.

Azure offers solutions including Infrastructure as a Service (IaaS), Platform as a Service (PaaS), and Software as a Service (SaaS). These solutions can be used for services such as analytics, virtual computing, storage, and networking.

Azure Core Concepts

1. Compute Services:

Azure Virtual Machines (VMs) allow users to run virtualized Windows or Linux servers in the cloud, providing flexibility and scalability. Azure App Service supports the deployment of web and mobile applications without managing infrastructure, while Azure Functions enables serverless computing for event-driven scenarios.

2. Storage Services:

Azure Storage provides a suite of scalable and secure storage solutions. Blob Storage is ideal for large amounts of unstructured data, Table Storage is a NoSQL data store for semi-structured data, Queue Storage facilitates communication between components, and Azure Files offers fully managed file shares.

3. Networking:

Azure Virtual Network enables the creation of isolated and customizable networks. Azure Load Balancer distributes incoming network traffic across multiple servers to enhance availability and responsiveness.

4. Databases:

Azure offers managed database services like Azure SQL Database for relational databases, Cosmos DB for globally distributed NoSQL databases, and Azure Database for MySQL and PostgreSQL to cater to various database needs.

5. Identity and Access Management:

Azure Active Directory (AD) is a comprehensive identity and access management service. It allows users to securely sign in and access Azure resources, providing a single sign-on experience.

6. Security and Compliance:

Azure Security Center helps safeguard applications from threats, Azure Policy allows the enforcement of organizational standards, and Azure Blueprints facilitates the deployment of compliant environments to meet regulatory requirements.

7. Monitoring and Management:

Azure Monitor provides a unified view of application performance and health. Azure Resource Manager (ARM) simplifies resource management and deployment through templates, allowing consistent and repeatable deployments.

8. Serverless Computing:

Azure Functions enables developers to write and deploy code without worrying about the underlying infrastructure. This serverless model allows for efficient handling of event-driven workloads, ensuring optimal resource usage and cost-effectiveness.

9. Artificial Intelligence (AI) and Machine Learning:

Azure AI and Machine Learning services empower developers and data scientists to build, train, and deploy machine learning models. Azure Cognitive Services offer pre-built AI capabilities, such as vision, speech, and language understanding.

10. DevOps:

Azure DevOps provides a set of tools for collaborative software development and delivery. Azure Repos supports version control, Azure Pipelines enables continuous integration and continuous deployment (CI/CD), and Azure Boards facilitates agile project management.

These deeper insights into each core concept highlight the versatility and richness of Microsoft Azure, offering a comprehensive cloud ecosystem for a wide range of applications and business needs.

SQL Azure

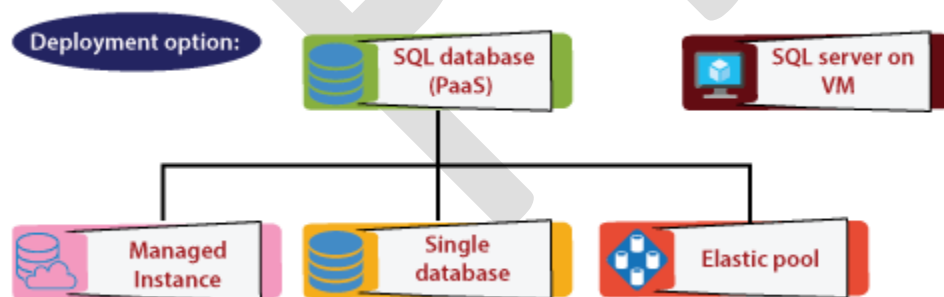
Azure SQL is a cloud database service from Microsoft that allows organizations to store relational data in the cloud. It's built on Microsoft's Windows Azure cloud computing platform and SQL Server database technology.

SQL database is the flagship product of Microsoft in the database area. It is a general-purpose relational database that supports structures like relation data - JSON, spatial, and XML. The Azure platform fully manages every Azure SQL Database and guarantees no data loss and a high percentage of data availability. Azure automatically handles patching, backups, replication, failure detection, underlying potential hardware, software or network failure, deploying bug fixes, failovers, database upgrades, and other maintenance tasks.

There are three ways we can implement our SQL database

- **Managed Instance:** This is primarily targeted towards on-premises customers. In case, if we already have a SQL server instance in our on-premises data-center and you want to migrate that into Azure with minimum changes to our application and the maximum compatibility. Then new will go for the managed instance.
- **Single database:** We can deploy a single database on Azure its own set of resources managed via a logical server.
- **Elastic pool:** We can deploy a pool of databases with a shared set of resources managed via a logical server.

We can deploy the SQL database as an infrastructure as a service. That means we want to use the SQL server on an Azure virtual machine, but in that case, we are responsible for managing the SQL server on that particular Azure virtual machine.



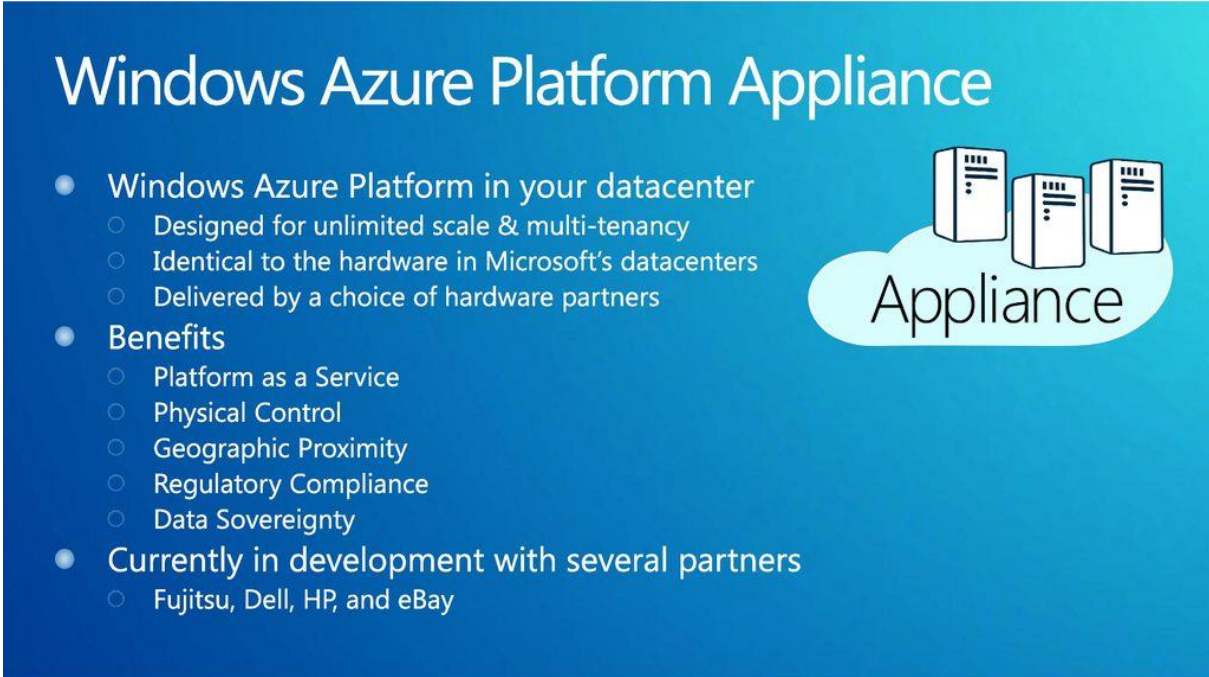
Azure SQL Database provides several security features, such as:

- Network security
- Encryption at rest and in transit
- Row-level security
- Threat detection

Windows Azure Platform Appliance

The Windows Azure Platform Appliance is a solution for governments and service providers who want to have their own cloud computing infrastructure. It consists of Windows Azure, SQL Azure, and a Microsoft-specified configuration of network, storage, and server hardware.

The Windows Azure Platform Appliance is a comprehensive solution allowing organizations to bring Microsoft Azure cloud services into their own data centers. This integrated system combines hardware and software components, creating a private cloud infrastructure. It empowers businesses to leverage Azure services like computing and storage while maintaining control over their data on-site. The Windows Azure Platform Appliance is ideal for organizations with specific compliance, security, or performance needs, offering a hybrid cloud environment that merges the advantages of the public cloud with the security of an on-premises data center.

A blue gradient graphic with the title 'Windows Azure Platform Appliance' at the top. Below the title is a bulleted list of features and benefits. To the right of the list is an illustration of three server racks on a cloud labeled 'Appliance'.

Windows Azure Platform Appliance

- Windows Azure Platform in your datacenter
 - Designed for unlimited scale & multi-tenancy
 - Identical to the hardware in Microsoft's datacenters
 - Delivered by a choice of hardware partners
- Benefits
 - Platform as a Service
 - Physical Control
 - Geographic Proximity
 - Regulatory Compliance
 - Data Sovereignty
- Currently in development with several partners
 - Fujitsu, Dell, HP, and eBay

Appliance

➤ Integration of Azure Services:

The Windows Azure Platform Appliance integrates Microsoft Azure cloud services into on-premises data centers, allowing organizations to utilize Azure's computing, storage, and networking capabilities within their own infrastructure.

➤ Comprehensive Solution:

This solution comprises both hardware and software components, creating a complete and integrated system for deploying private cloud infrastructure.

➤ **Control and Security:**

Organizations can maintain control over their data and ensure security by deploying the Windows Azure Platform Appliance within their own data centers. This is particularly beneficial for businesses with specific compliance and security requirements.

➤ **Hybrid Cloud Environment:**

The appliance facilitates the creation of a hybrid cloud environment, enabling a seamless integration of on-premises infrastructure with Azure's public cloud services.

➤ **Flexibility for Workloads:**

Well-suited for scenarios where certain workloads and data need to reside on-premises due to regulatory or performance considerations.

➤ **Ideal for Specific Requirements:**

Particularly suitable for organizations with specific compliance, security, or performance needs that prefer to keep certain workloads and data within their own infrastructure.

➤ **Balanced Approach:**

Offers a balanced approach, combining the advantages of public cloud services with the control and security provided by on-premises data centers.

➤ **Enhanced Data Control:**

Enables businesses to retain enhanced control over their data, addressing concerns related to data sovereignty and privacy.

In summary, the Windows Azure Platform Appliance is a comprehensive and flexible solution that seamlessly integrates Azure services into on-premises data centers, providing a hybrid cloud environment with enhanced control and security.